

LOKKBOX

DOCUMENTATION

MICROSOFT EXCHANGE INDIVIDUAL BRICK LEVEL BACKUP & RESTORE OPERATIONS

Copyright Notice

The use and copying of this product is subject to a license agreement. Any other use is prohibited. No part of this publication may be reproduced, transmitted, transcribed, stored in a retrieval system or translated into any language in any form by any means without the prior written consent of us. Information in this manual is subject to change without notice and does not represent a commitment on the part of the vendor. We do not warrant that this document is error free. If you find any errors in this document, please report to us in writing.

This product includes software developed by the Apache Software Foundation (<http://www.apache.org/>).

Trademarks

Microsoft, Windows, Microsoft Exchange Server and Microsoft SQL Server are registered trademarks of Microsoft Corporation.
Sun, Solaris, SPARC, Java and Java Runtime Environment are registered trademarks of Sun Microsystems Inc.
Oracle, Oracle 8i, Oracle 9i are registered trademarks of Oracle Corporation.
Lotus, Domino, Notes are registered trademark of IBM Corporation.
Red Hat is registered trademark of Red Hat, Inc.
Linux is registered trademark of Linus Torvalds.
Apple and Mac OS X are registered trademarks of Apple Computer, Inc.

All other product names are registered trademarks of their respective owners.

Disclaimer

Lokkbox LLC will not have or accept any liability, obligation or responsibility whatsoever for any loss, destruction or damage (including without limitation consequential loss, destruction or damage) however arising from or in respect of any use or misuse of or reliance on this document. By reading and following the instructions in this document, you agree to accept unconditionally the terms of this Disclaimer and as they may be revised and/or amended from time to time by Lokkbox LLC without prior notice to you.

1 Backup/Restore Individual Brick Level Backup for Microsoft Exchange Server

1.1 Requirements

- i. Microsoft Exchange Server 2000 with Service Pack 3 and post-SP3 update rollup installed. Please refer to <http://www.microsoft.com/exchange/> for more information.
Or
Microsoft Exchange Server 2003 or Microsoft Exchange Server 2007.
- ii. Lokkbox OBM must be installed onto the computer running Microsoft Exchange Server 2000 / 2003 / 2007.

1.2 Overview

Brick Level Backup for Microsoft Exchange Server is not designed to fully protect an Exchange server, but to facilitate easy backup and fast restore of individual emails, contacts, calendars, tasks etc. The brick level restore cannot fully recover the Information Store after a disaster. If used, a brick level backup must be utilized in conjunction with full Information Store Backup, in order to fully protect the exchange server.

1.3 Granting Privileges

Brick Level Backup requires “Full Mailbox Access” permission for the user running Lokkbox OBM. Normally, Lokkbox OBM can acquire the permission on it’s own but if you encounter ‘Access Denied’ errors you need to manually grant access privileges to the user running Lokkbox OBM using one of the following instructions below:

For one specific mailbox

Use the following procedure to grant access to an Exchange 2000 / 2003 / 2007 mailbox:

- 1 Start Active Directory Users and Computers.
- 2 On the View menu, ensure that the Advanced Features check box is selected.
- 3 Right-click the user whose mailbox you want to give permissions to and choose Properties.
- 4 On the Exchange Advanced tab, click Mailbox Rights.
- 5 Notice that the Domain Admins and Enterprise Admins have both been given Deny access to Full Mailbox access.
- 6 Click Add, click the user or group who you want to have access to this mailbox, and then click OK.
- 7 Be sure that the user or group is selected in the Name box.
- 8 In the Permissions list, click Allow next to Full Mailbox Access, and then click OK.
- 9 Click Ok all the way out.
- 10 Restart the Microsoft Exchange Information Store.

For mailboxes located within a specific mailbox store

Use the following procedure to grant access to an Exchange 2000 / 2003 / 2007 mailbox found on a specific mailbox store:


- 1 Start Exchange System Manager.
- 2 Drill down to your server object within the appropriate Administrative Group. Expand the server object and find the required mailbox store within the appropriate Storage Group. Right-click it and choose Properties.
- 3 In the Properties window go to the Security tab.
- 4 Click Add, click the user or group who you want to have access to the mailboxes, and then click OK.
- 5 Be sure that the user or group is selected in the Name box.
- 6 In the Permissions list, click Allow next to Full Control, and then click OK.
- 7 Click 'Apply' and 'OK'
- 8 Restart the Microsoft Exchange Information Store.

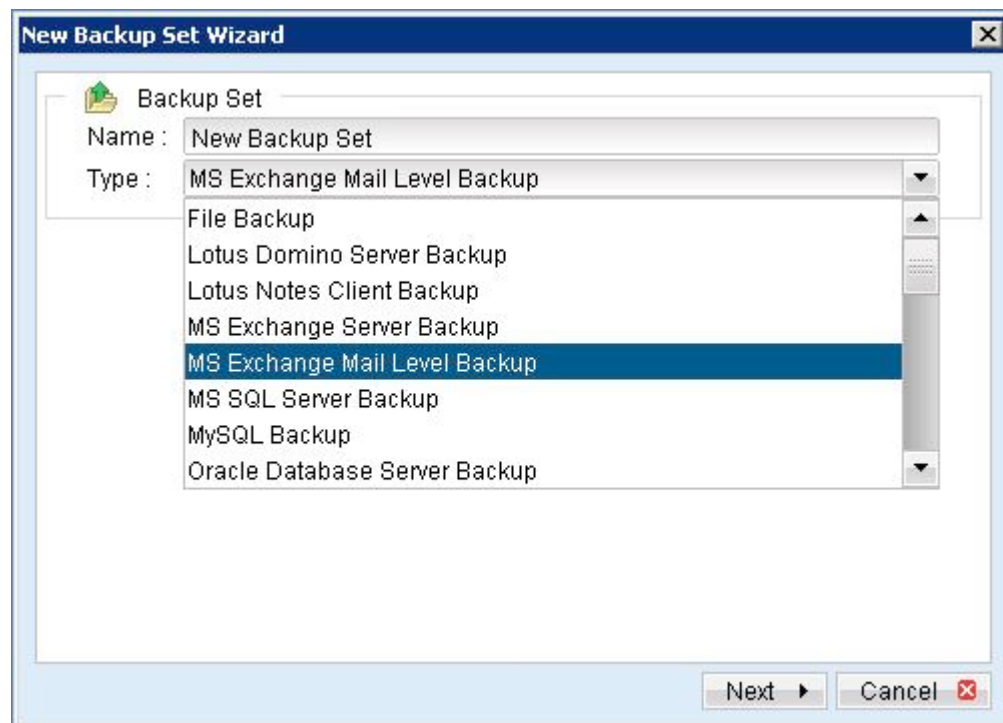
For mailboxes located within a specific server

- 1 Start Exchange System Manager.
- 2 Drill down to your server object within the appropriate Administrative Group. Right-click it and choose Properties.
- 3 In the Properties window go to the Security tab.
- 4 Click Add, click the user or group who you want to have access to the mailboxes, and then click OK.
- 5 Be sure that the user or group is selected in the Name box.
- 6 In the Permissions list, click Allow next to Full Control, and then click OK.
- 7 Click Ok all the way out.
- 8 Restart the Microsoft Exchange Information Store.

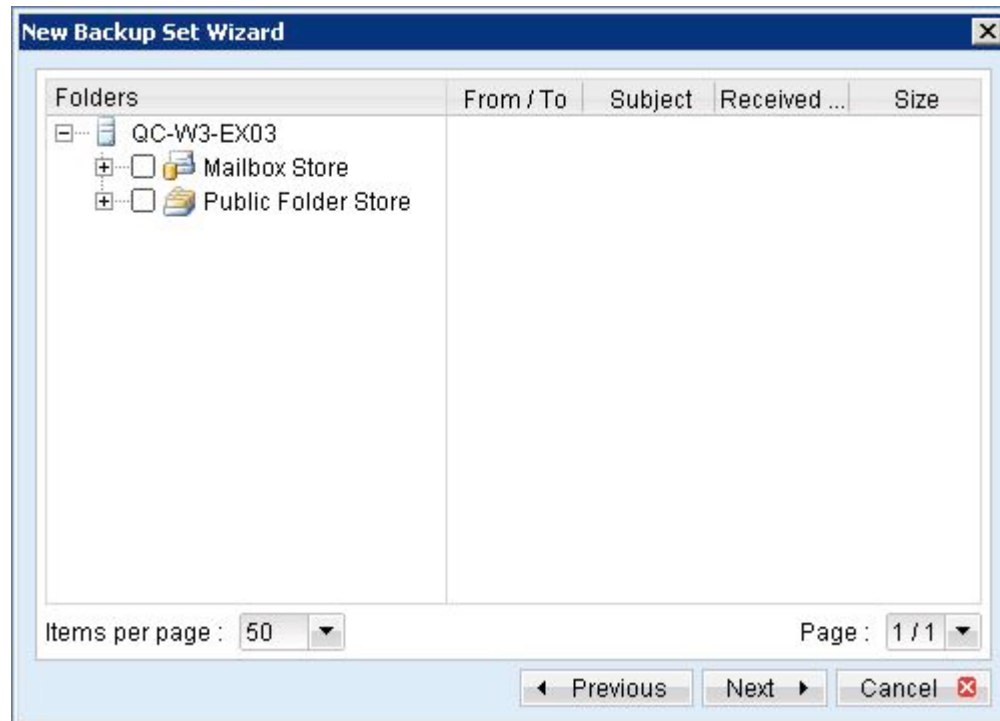
1.4 How to backup Individual Brick Level Backup

Please follow the instructions below to backup all individual items within your Microsoft Exchange Server 2000 / 2003 / 2007 using Lokkbox OBM:

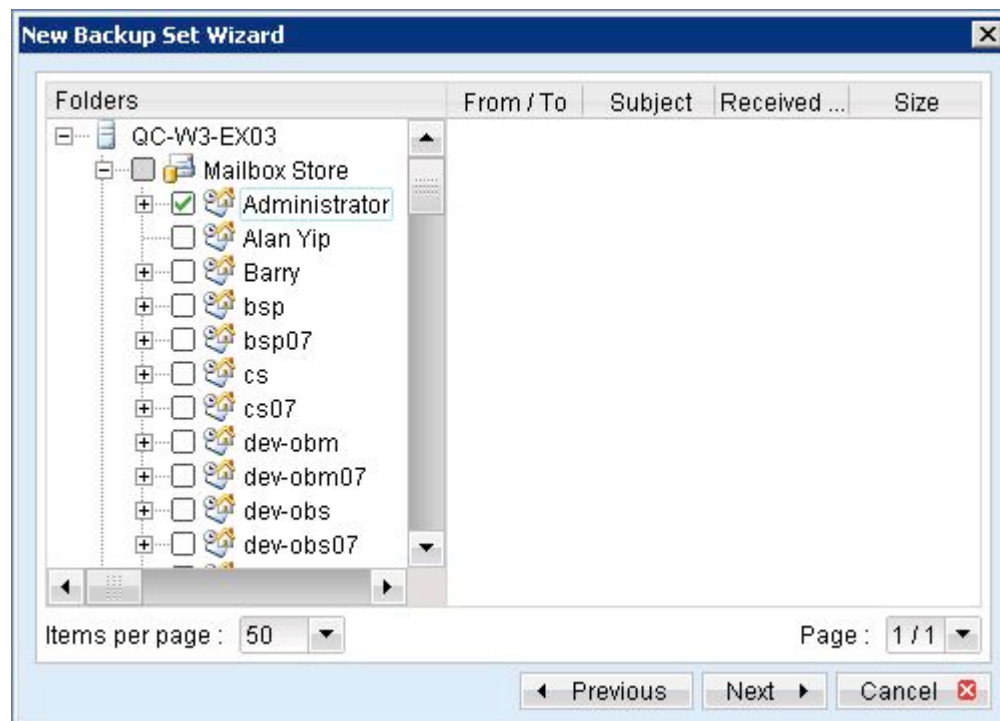
- i. Open Lokkbox OBM
- ii. Create a backup set
 - a. To start setting up backup sets, click the  button to open the [Backup Setting] dialog.
 - b. On the left panel, press the  button to create a new backup set.
 - c. On the dialog, choose [MS Exchange Mail Level Backup] as the [Type].



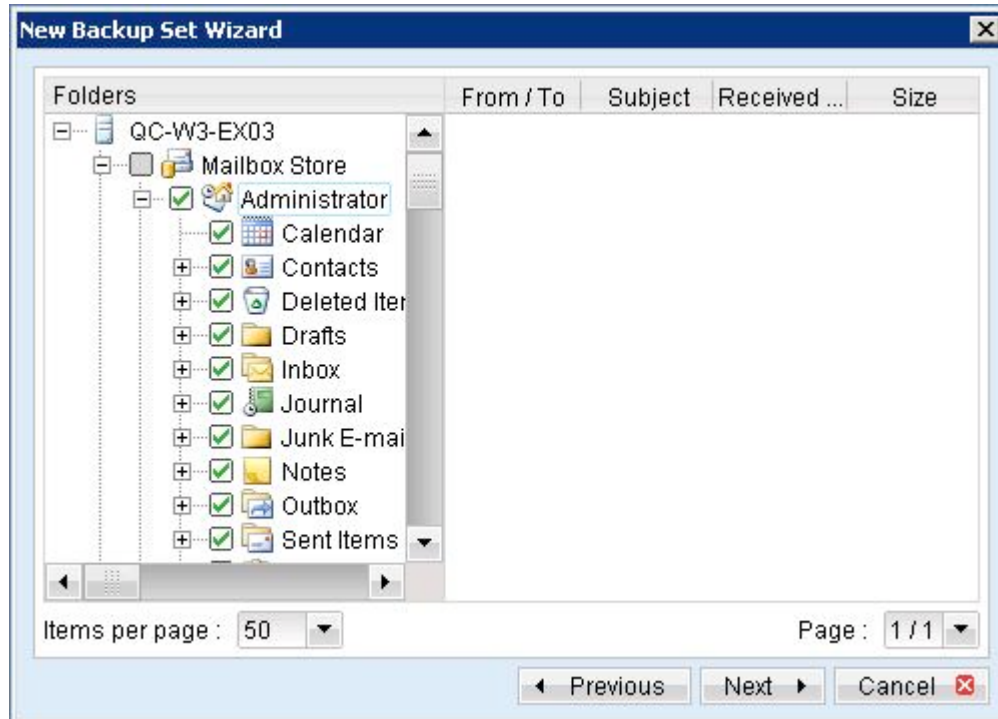
- d. Enter a name for your backup set.



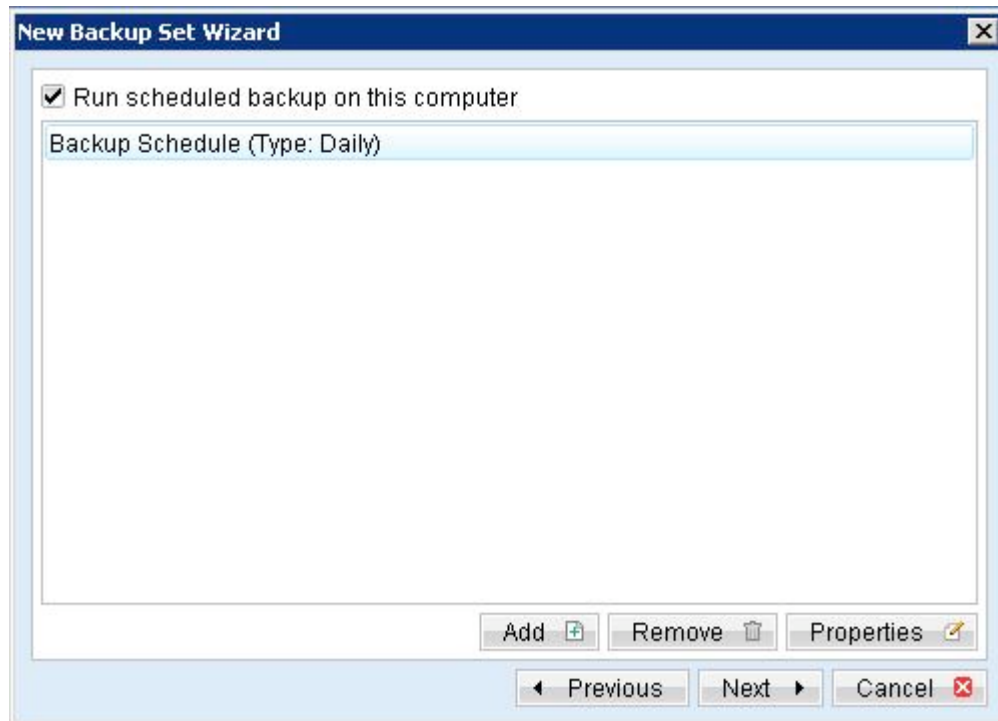
- e. Select the email account(s) to backup.

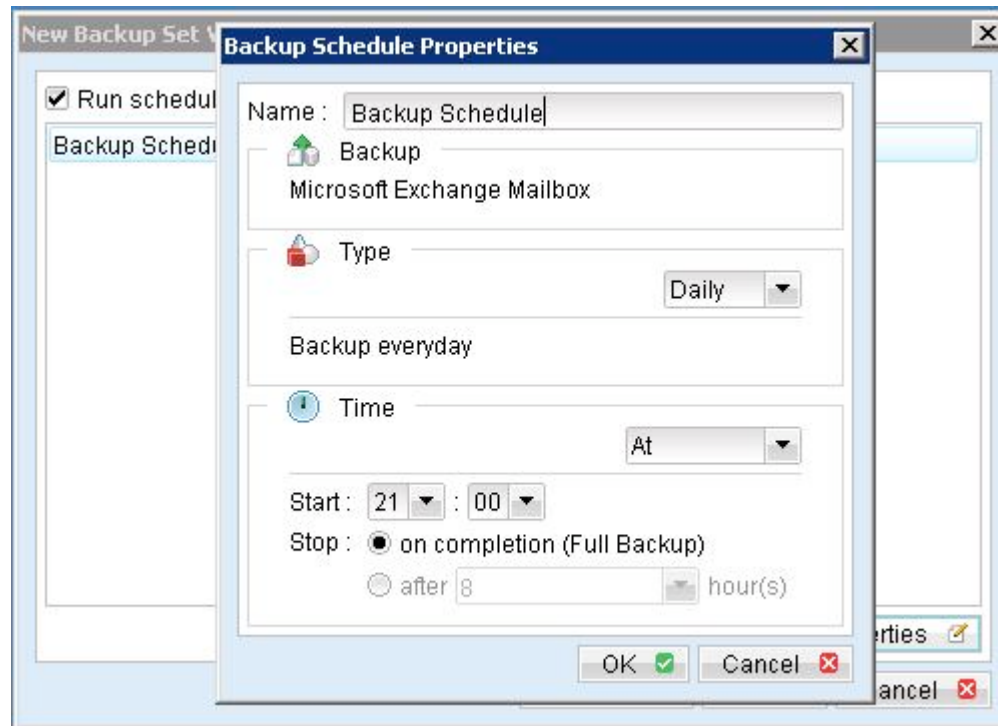


You can drill down to select individual items.

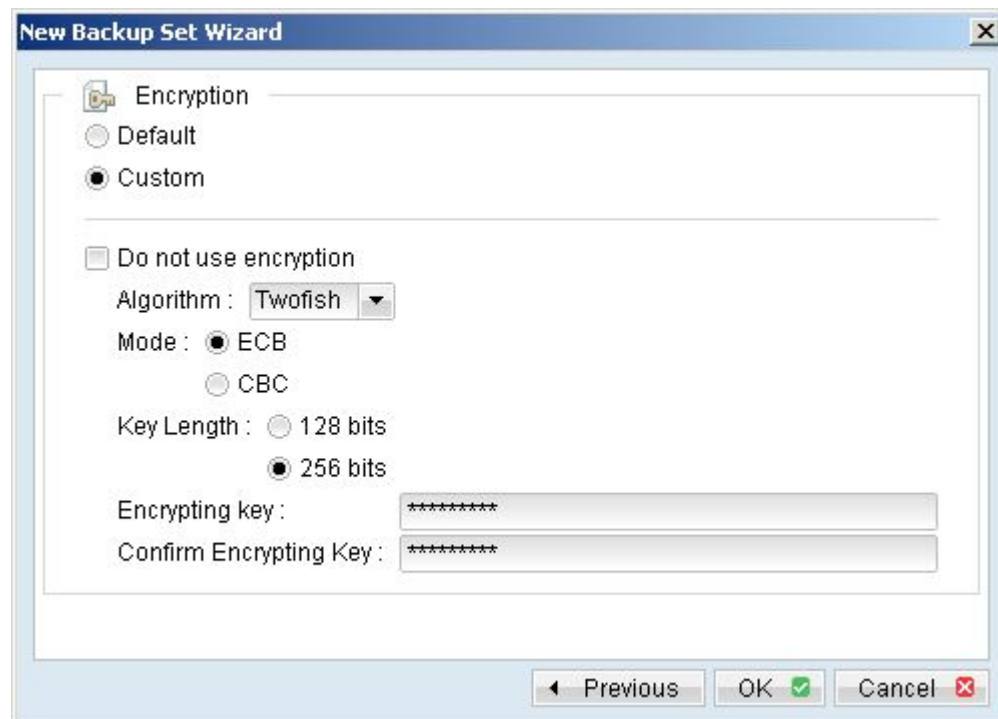


f. Set the backup schedule



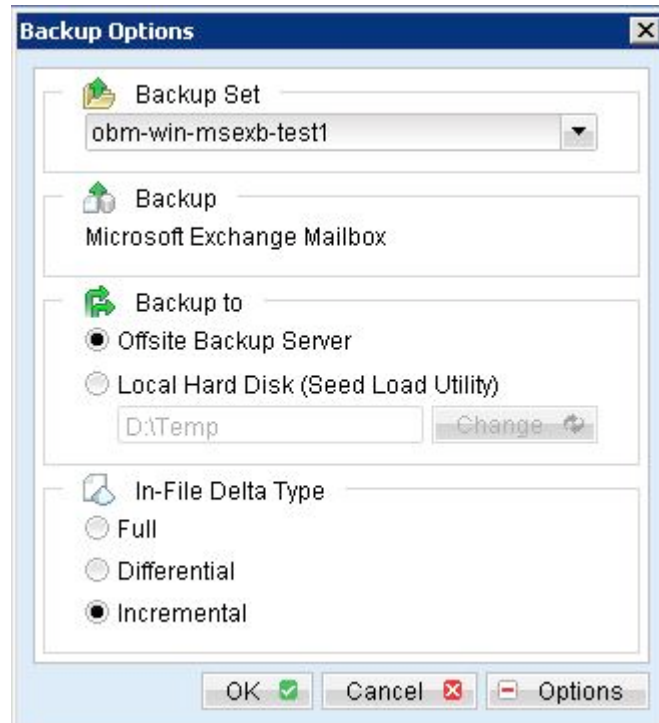


- g. Set the encryption algorithm, encryption mode and encrypting key for this backup set

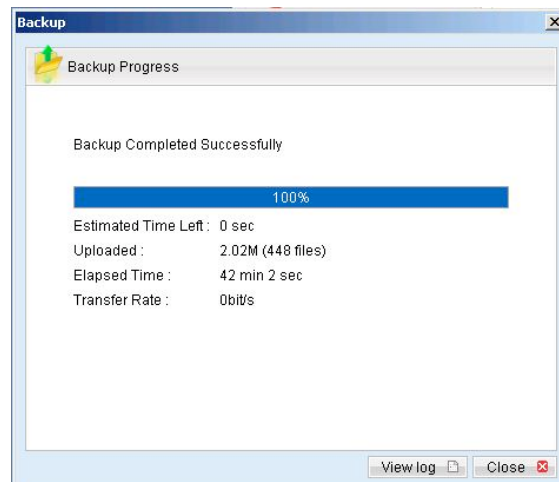


(Hint: For maximum security, please select AES (Advanced Encryption Standard) Algorithm, CBC (Cipher Block Chaining) mode and use an encrypting

- key with more than 8 characters.)
- iii. Run Backup
 - a. Press the [Backup] button on the main page of Lokkbox OBM dialog.
 - b. Select the backup set you want to run and select [Online Backup Service] to start backing up your files to Lokkbox OBS. If applicable, you can change the In-File Delta Type also.



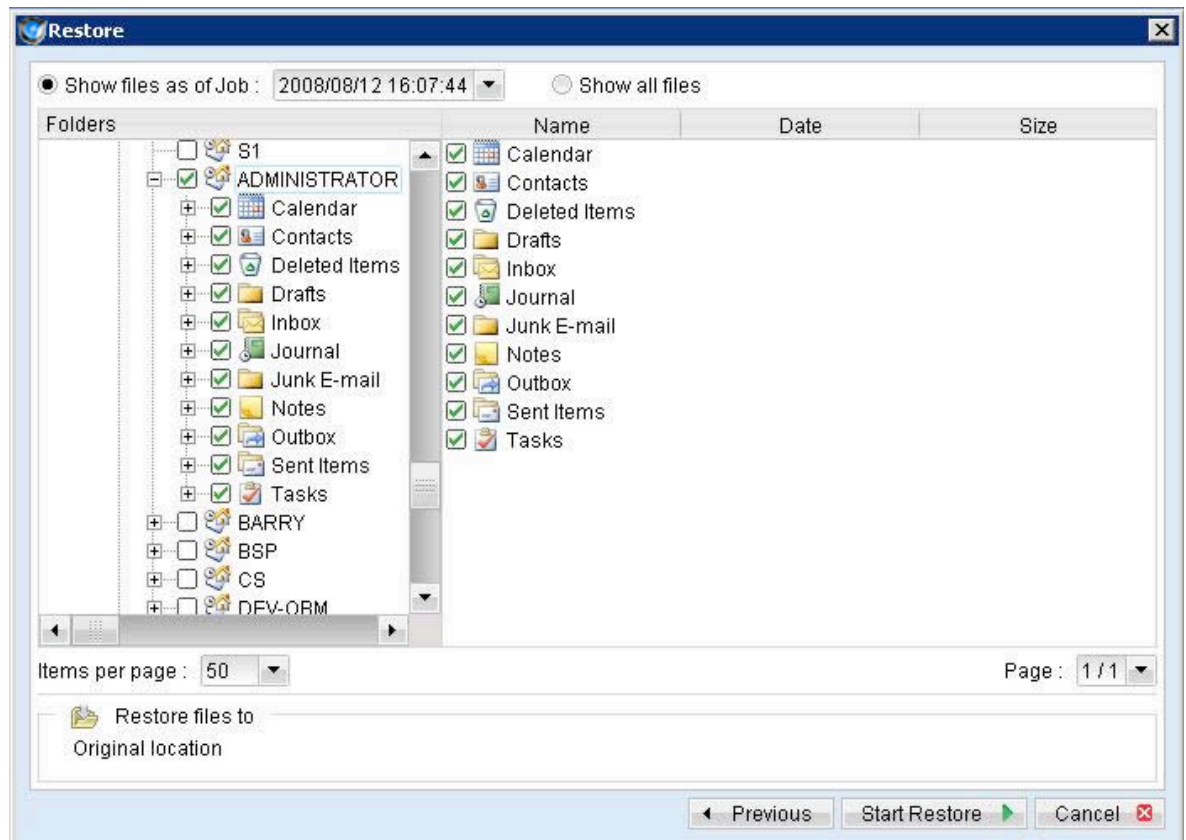
- c. Click [OK] to start backing up your files to Lokkbox OBS.
- d. You should get something similar to the screen shot below.



1.5 How to restore Individual Brick Level Backup

Please follow the instructions below to restore individual emails, contacts, calendars, tasks etc. from Lokkbox OBS back into your exchange server. Please note that individual brick level can only be restored using the Lokkbox OBM client.

- i. Open Lokkbox OBM
- ii. Select the [Restore] button on the left of the main page of Lokkbox OBM dialog.
- iii. Select the backup set from which you would like files to be restored from the list.
- iv. Select the items you want to restore



- v. Press the [Start Restore] button to restore

- vi. Restore complete. Please logon to exchange to get the restored items.

